

Prices effective as of October 1, 2001

Per Space

Adult (all sections) \$300.00

Babyland \$150.00

Opening and Closing

Adult Weekday \$325.00

Adult Weekend or Holiday \$450.00

County Service \$150.00

Baby Weekday \$175.00

Baby Weekend or Holiday \$300.00

Cremains Weekday \$175.00

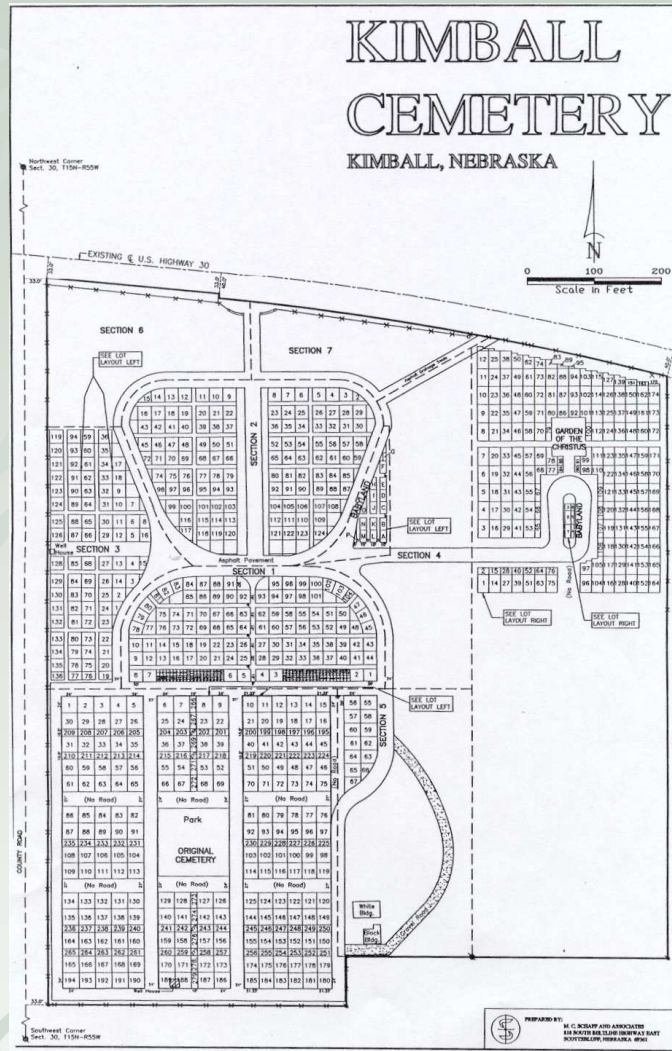
Cremains Weekend or Holiday \$300.00

Disinterment

Adult \$400.00

Baby or Cremains \$250.00

Burials will be allowed upon notification of the City of Kimball any day of the year except as follows: burials will not take place on Holidays as set by the Kimball City Council for city employees or on Sundays. The day after Thanksgiving and Christmas Eve can be used for burials, but will be considered as a holiday for charges as the City of Kimball currently declares these days as a holiday for city employees.



A full size map is in the directory which is located at the north end of Section 1. A complete listing of names is found on the back side of the directory.

City of Kimball
223 South Chestnut Street
Kimball, Nebraska 69145
(308) 235-3639

Kimball Cemetery and Christus Garden

The Cemetery is open during daylight hours for visitations. The gates are unlocked at dawn and locked at sundown each day.

Rules and Regulations

- 1.** No plot may be defined by any kind of fence, coping, railing, hedge, or embankment; nor may any plot be filled above the established grade. Wire arches and trellises shall not be placed on any plot or grave. No plot or grave space may be decorated by its owner or others with any tree or shrub.
- 2.** The City of Kimball shall have authority to remove any flowers, floral designs, weeds, trees, shrubs, plants, or herbage of any kind from the Cemetery as soon as in, the judgment of the Caretaker, they become unsightly, detrimental or diseased. The expense of the removal of trees, shrubs, or any special planting, placed on graves by plot owners shall be paid by the plot owner.
- 3.** The City of Kimball reserves the right to prevent the removal of any trees, shrubs, plants, or herbage of any kind unless the Caretaker gives his consent.
- 4.** The City of Kimball shall not be liable for floral pieces, baskets, frames in which or to which floral pieces are attached. The City of Kimball shall not be liable for lost, misplaced, or broken floral vases.
- 5.** The City of Kimball shall not be responsible for plants, herbage, or shrubs of any kind damaged by the

elements, thieves, vandals or by other causes beyond its control.

- 6.** Flowers placed on the gravesite at the time of interment shall be left undisturbed after the interment is complete, until final removal under the instructions of the Caretaker. When the flowers, and the frames to which they are attached, are removed from the grave, such items may be disposed of by the City of Kimball in any manner it sees fit.
- 7.** Flowers and other items placed on the gravesite during any Holiday season will need to be picked up by the owner within 5 days following the Holiday. Otherwise, the caretaker may begin disposing of these items in order to continue with the maintenance of the cemetery.
- 8.** Flags will be permitted on graves when they are customarily displayed, for the duration of that specific occasion.
- 9.** Organizations' metal markers must be placed in the foundation of the marker or monument, or they will not be allowed to remain in the Cemetery.
- 10.** Permanent vases in Christus Garden or those vases that are not presently in line with markers or monuments in the Kimball Cemetery, must be kept upside down during the mowing

season. They will be allowed up for the duration of a specific occasion.

- 11.** Permanent vases will not be permitted in front or back of marker or monument. They must be placed to the sides.
- 12.** It is prohibited to cut, pick, deface, or mutilate any park plantings.
- 13.** Foot markers are not allowed, unless kept flush with the established grade.
- 14.** Concrete or granite foundations for markers and monuments shall be required in all sections of the cemetery with the exception of Christus Garden. All foundations shall only be installed with the permission, and under the supervision of the Caretaker. Concrete foundations shall not exceed 22 inches in width. They must be kept level with the lowest established grade, and not exceed the length of property owned.
- 15.** Foundations are not permitted for markers in Christus Garden.
- 16.** Any monument company that shall enter the Cemetery for work on markers or monuments, shall give the Caretaker 24 hour notice before arrival to complete such work.